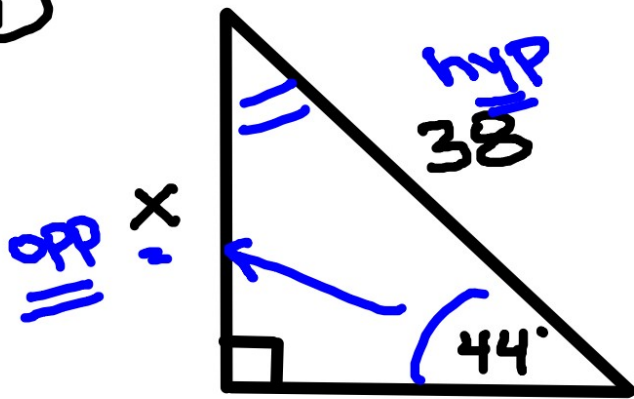


DRILL

①

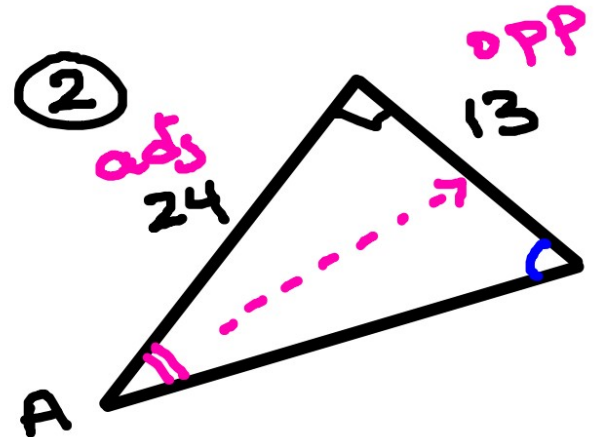


Solve for x:

$$38 \sin 44^\circ = \frac{x}{38} \cdot 38$$

$$26.4 \approx x$$

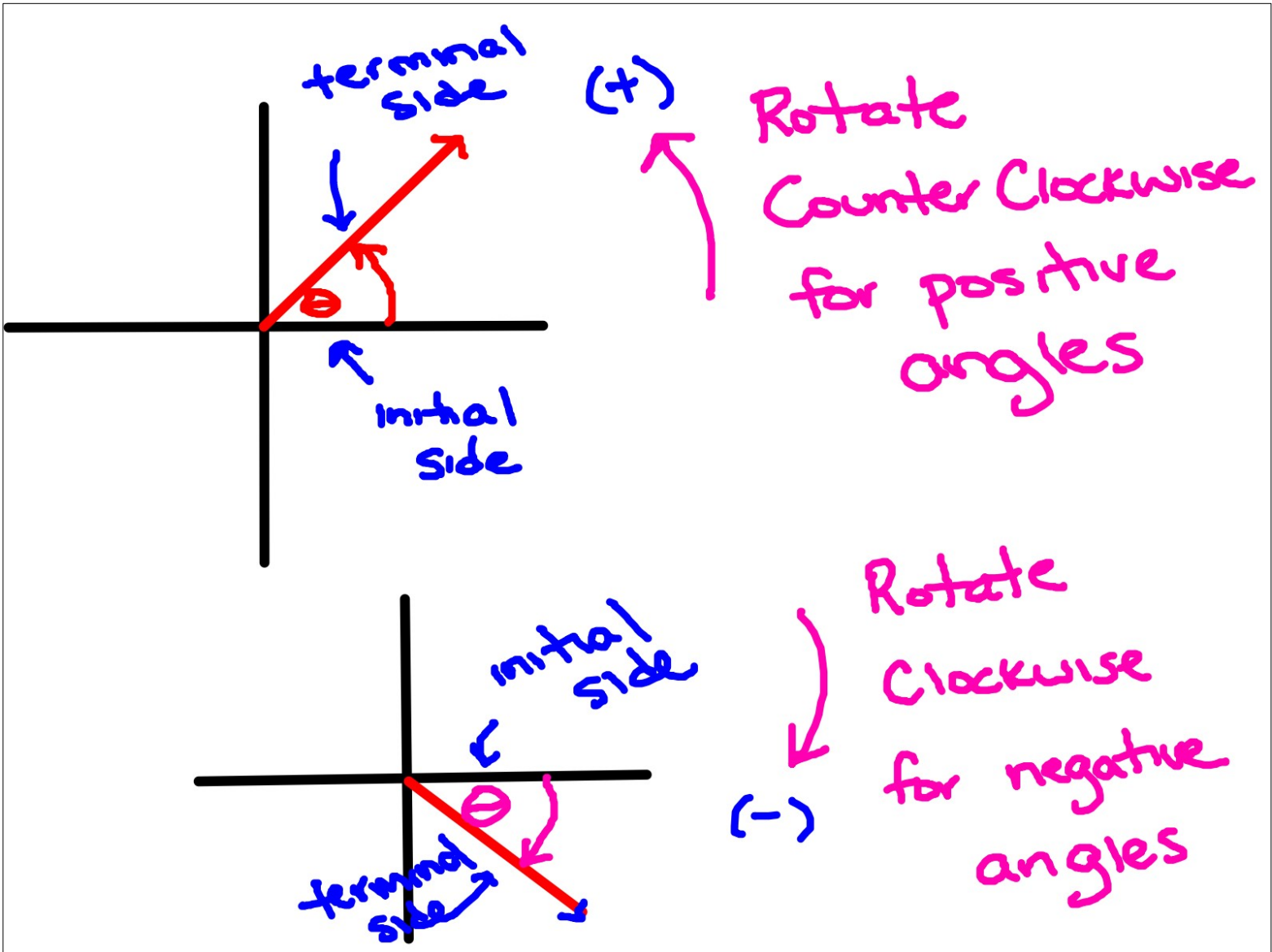
②



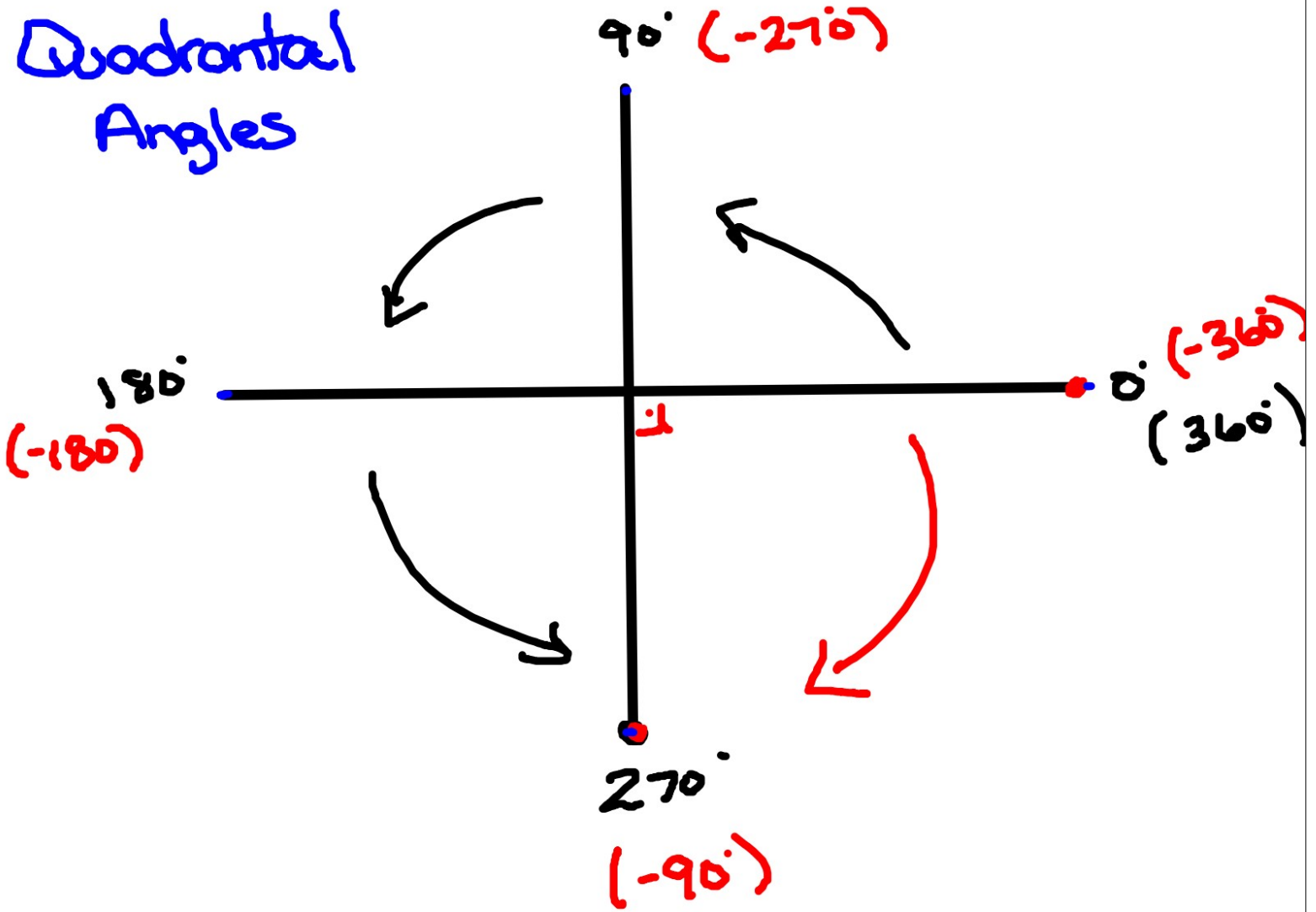
Find $m\angle A$

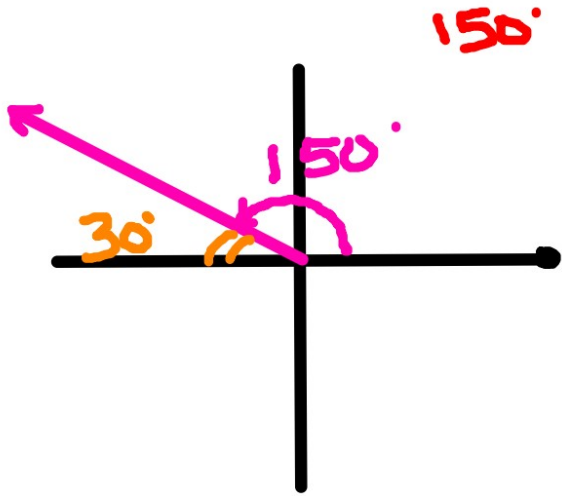
$$\tan A = \frac{13}{24}$$

$$m\angle A = 28.44^\circ$$



Quadrantal Angles





SKETCH THE ANGLE

