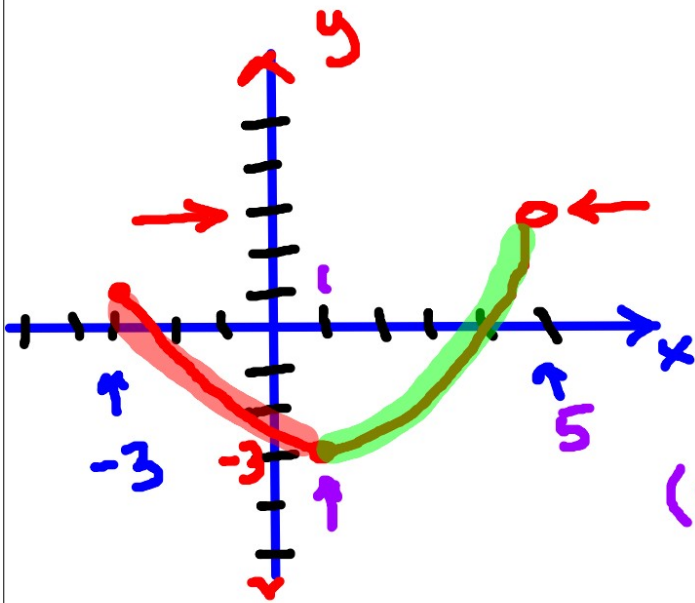


DRILL



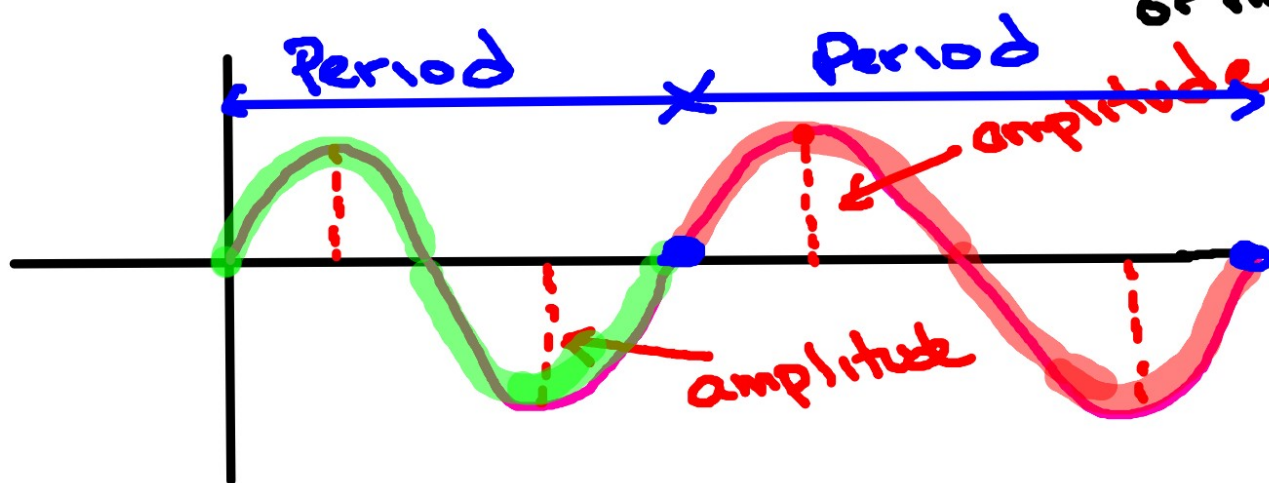
① What is the domain & range?

D: $[-3, 5)$ & $[-3, 3)$

② What intervals (x-values) is the graph increasing & decreasing?

DEC: $(-3, 1)$ INC $(1, 5)$

TRIG FUNCTIONS



* If there is no max or min, then there is no amplitude.

AMPLITUDE: Height of a "wave", distance from a max/min to the midline of the graph (midline).

Period: The length of one cycle.

$\theta = \text{theta}$

Intro to Trig Functions

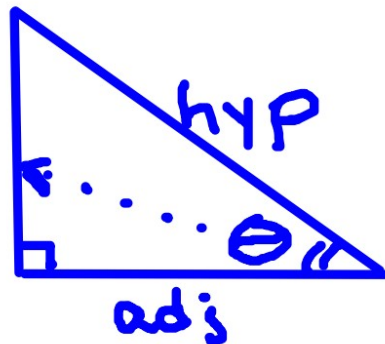
$$\text{Sine } \theta = \sin \theta = \frac{\text{opp}}{\text{hyp}}$$

$$\text{Cosine } \theta = \cos \theta = \frac{\text{adj}}{\text{hyp}}$$

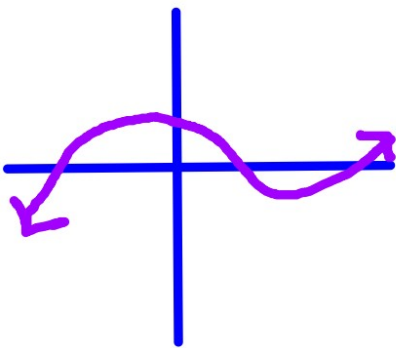
$$\text{Tangent } \theta = \tan \theta = \frac{\text{opp}}{\text{adj}}$$

SOH CAH TOA

opp

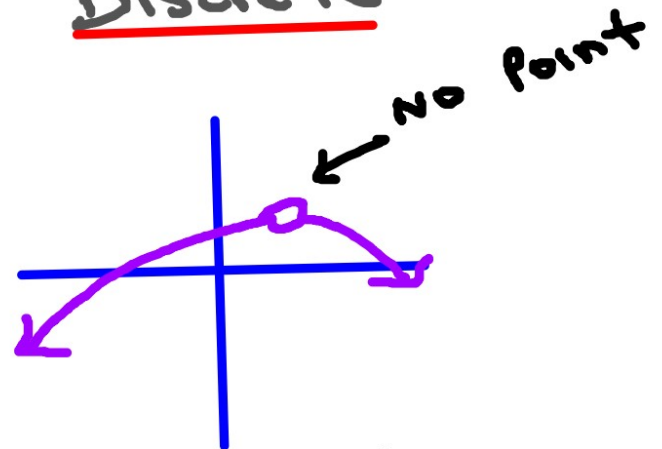


Continuous



- * No breaks
- * Can be drawn w/o picking up the pencil

Discrete



- * Break / Jump
- * Can not be drawn w/o picking up pencil.