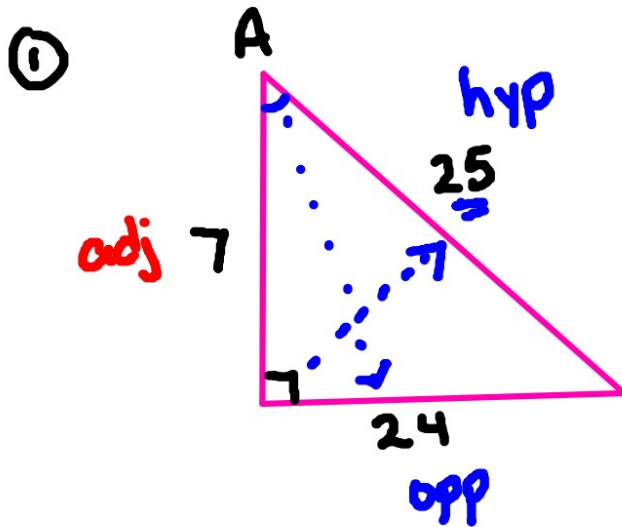


# DRILL

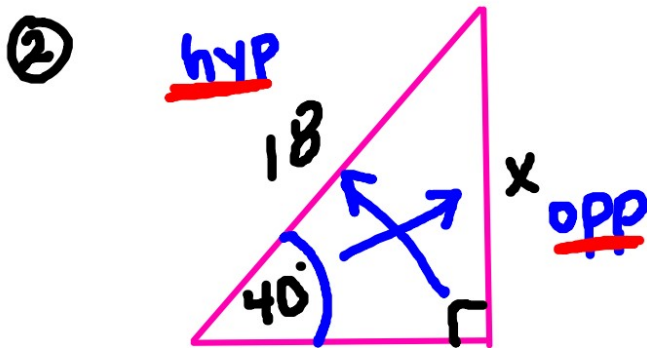
SOH CAH TOA



Find  $\sin A = \frac{24}{25}$

$$\cos A = \frac{7}{25}$$

$$\tan A = \frac{24}{7}$$

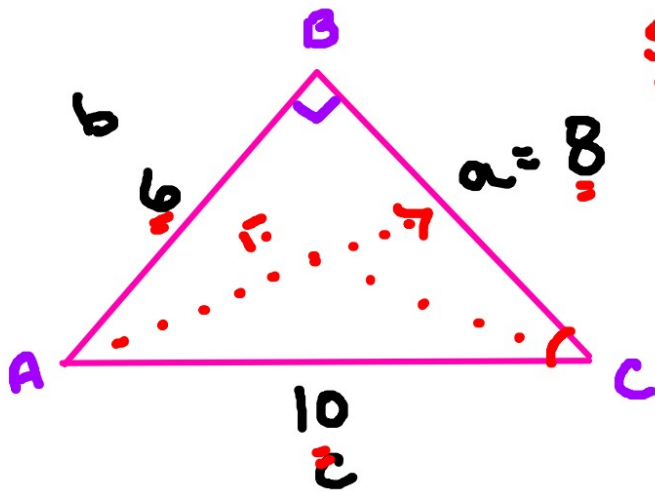


Solve for x:

$$18 \cdot \sin 40^\circ = \frac{x}{18} \cdot 18$$

$$\boxed{11.57 \approx x}$$

Ex:



SOH CAH TDA

Pythagorean Thm.

$$a^2 + b^2 = c^2$$

(hyp)

$$a^2 + 6^2 = 10^2$$

$$a^2 + 36 = 100$$

$$\begin{array}{r} -36 \\ \hline \sqrt{a^2} = \sqrt{64} = 8 \end{array}$$

$$\tan A = \frac{8}{6} = \frac{4}{3}$$

$$\cos C = \frac{8}{10} = \frac{4}{5}$$

Find:

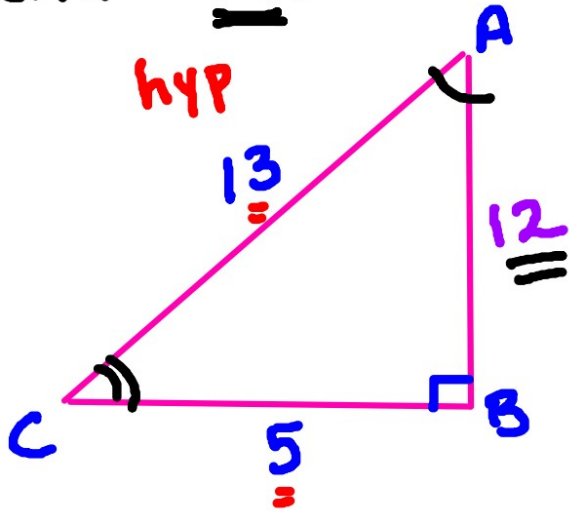
$$\sin C = \frac{6}{10} = \frac{3}{5}$$

$$\sin A = \frac{8}{10} = \frac{4}{5}$$

SOH

CAH

TOA



$$a^2 + 5^2 = 13^2$$

$$a^2 + 25 = 169$$

$$-25 \quad -25$$

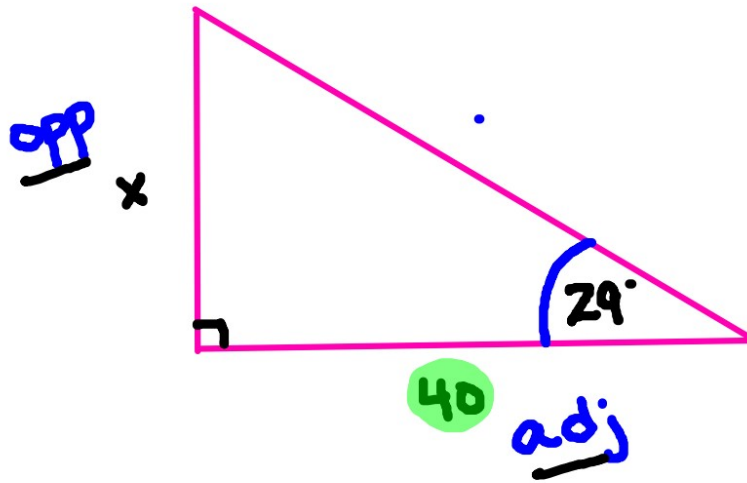
$$\sqrt{a^2} = \sqrt{144}$$

$$a = 12$$

Find:  $\sin C = \frac{12}{13}$

$$\tan A = \frac{5}{12}$$

SOH CAH TOA\*



$$40 \cdot \tan 29^\circ = \frac{\textcircled{x}}{\cancel{40}} \cdot \cancel{40}$$

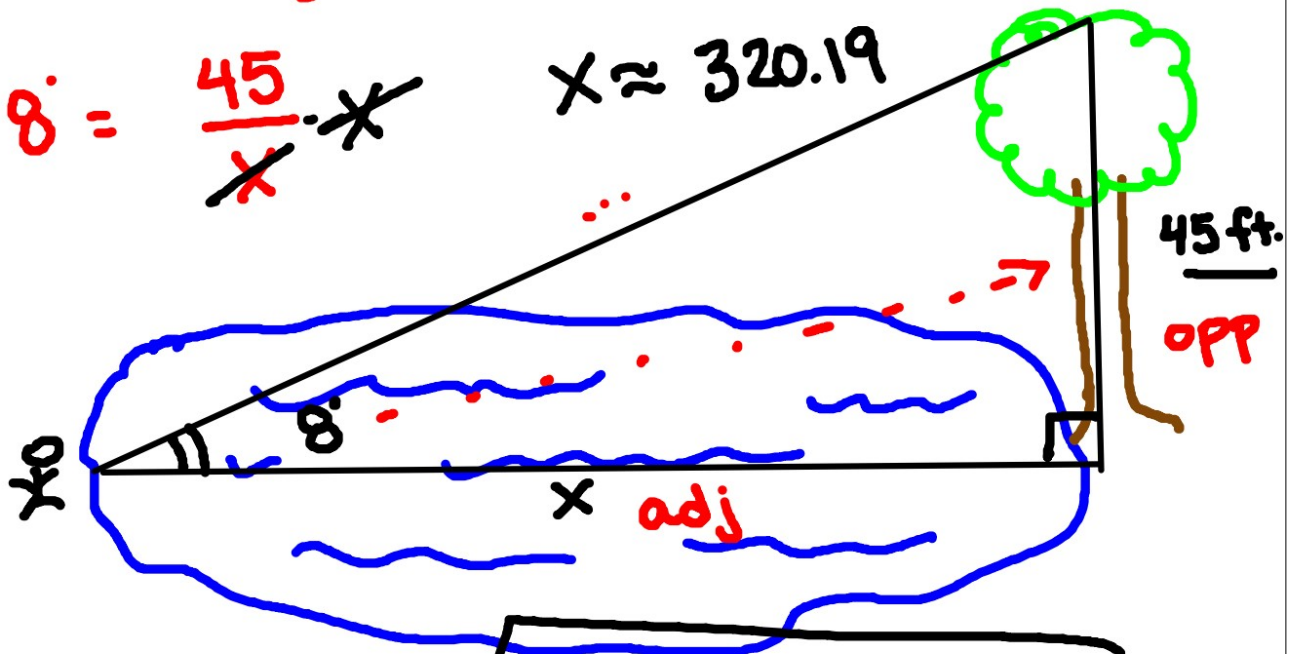
$$22.17 \approx x$$

$$\tan A = \frac{\text{opp}}{\text{adj}}$$

$$\frac{x \cdot \cancel{\tan 8^\circ}}{\cancel{\tan 8^\circ}} = \frac{45}{\tan 8^\circ}$$

$$x \tan 8^\circ = \frac{45}{x} \cdot x$$

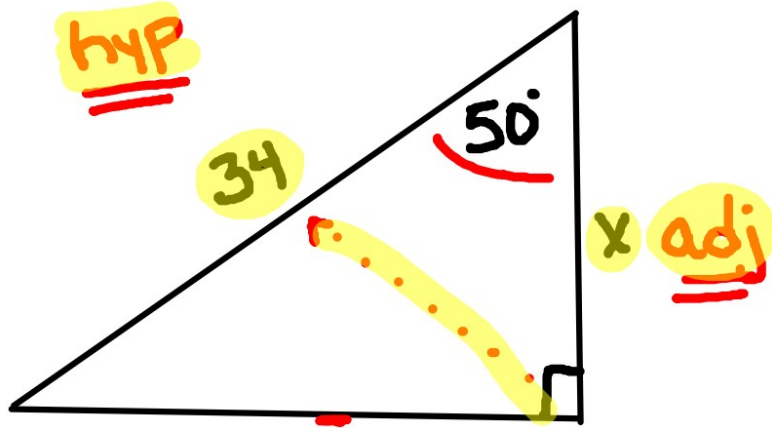
$$x \approx 320.19$$



320.19 feet

Ex:

\* SOH CAH TDA



$$34 \cdot \cos 50^\circ = \frac{x}{34} \cdot 34$$

$$x \approx 21.85$$

⊛

$$\sin A = \frac{\text{opp}}{\text{hyp}}$$

$$\cos A = \frac{\text{adj}}{\text{hyp}}$$

$$\tan A = \frac{\text{opp}}{\text{adj}}$$